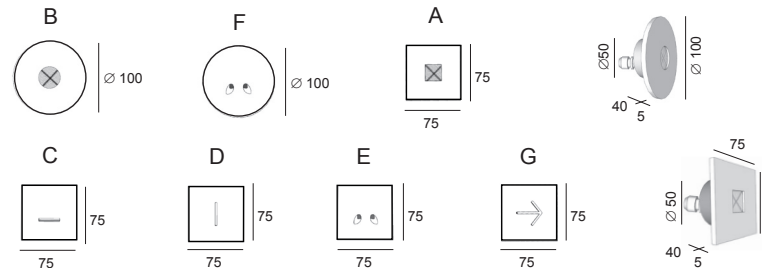


# Yorka - 1,2W/350mA

last update 27/06/2017

BEL1115

<b>Yorka A:</b>	code 8010_11_ __	1,2W - 350mA - CE - IP65		
<b>Yorka B:</b>	code 8011_11_ __	1,2W - 350mA - CE - IP65		
<b>Yorka C:</b>	code 8057_11_ __	1,2W - 350mA - CE - IP65		
<b>Yorka D:</b>	code 8058_11_ __	1,2W - 350mA - CE - IP65		
<b>Yorka E:</b>	code 8059_11_ __	1,2W - 350mA - CE - IP65		
<b>Yorka F:</b>	code 8060_11_ __	1,2W - 350mA - CE - IP65		
<b>Yorka G:</b>	code 8061_11_ __	1,2W - 350mA - CE - IP65		

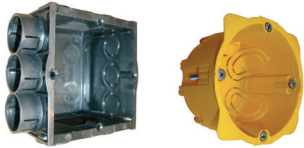


BEL LIGHTING sprl  
Avenue Ernest Solvay 42  
B-1480 Saintes (Tubize)  
Belgium  
Phone: +32(0)2 3552428  
Fax: +32(0)2 3550396  
e-mail: info@bel-lighting.com  
www.bel-lighting.com

## PART A

### 1 FIT THE PVC HOUSE BOX IN THE WALL

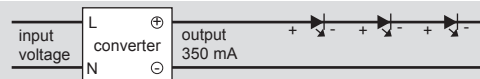
use with standard box



### Installation : Led Power Supply

Red : +  
Black : -

only use a Power supply delivery from BEL LIGHTING - SENICO

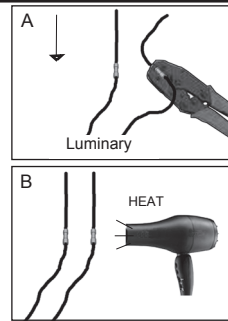
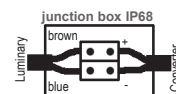


### INSTALLATION INSTRUCTIONS - PART A

1. FIT THE PVC HOUSE BOX IN THE WALL
2. MAKE THE ELECTRICAL CONNECTION
3. PLACE THE LUMINARY
4. SWITCH ON

### 2 ELECTRICAL CONNECTION

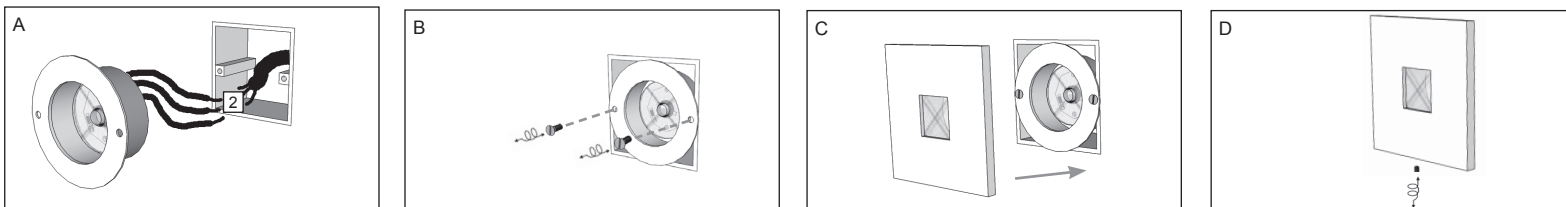
on 350mA



### ACCESSORY SET



### 3



Lees de algemene gebruiksvoorwaarden : PART B  
Lire attentivement les conditions générales d'utilisation : PART B  
Read attentively the general instructions : PART B  
Lesen Sie die allgemeinen Gebrauchsanweisungen : PART B  
Διαβάστε τις γενικές οδηγίες : PART B

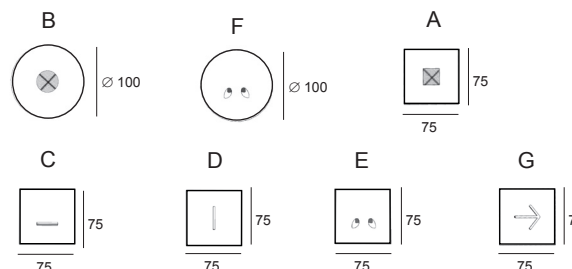
WAARSCHUWING  
AVERTISSEMENT  
WARNING  
WARNUNG  
ΠΡΟΣΟΧΗ

# Yorka - 3W/230V

last update 27/06/2017

BEL1115

<b>Yorka A:</b>	code 8010.W40. __	3W - 230V~ - CE - IP65 -		0,5	
<b>Yorka B:</b>	code 8011.W40. __	3W - 230V~ - CE - IP65 -		0,5	
<b>Yorka C:</b>	code 8057.W40. __	3W - 230V~ - CE - IP65 -		0,5	
<b>Yorka D:</b>	code 8058.W40. __	3W - 230V~ - CE - IP65 -		0,5	
<b>Yorka E:</b>	code 8059.W40. __	3W - 230V~ - CE - IP65 -		0,5	
<b>Yorka F:</b>	code 8060.W40. __	3W - 230V~ - CE - IP65 -		0,5	
<b>Yorka G:</b>	code 8061.W40. __	3W - 230V~ - CE - IP65 -		0,5	



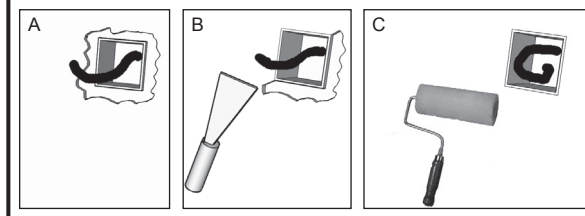
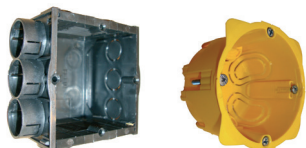
BEL LIGHTING sprl  
Avenue Ernest Solvay 42  
B-1480 Saintes (Tubize)  
Belgium  
Phone: +32(0)2 3552428  
Fax: +32(0)2 3550396  
e-mail: info@bel-lighting.com  
www.bel-lighting.com

## PART

## A

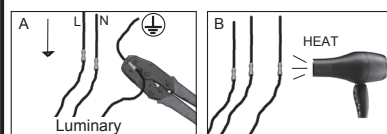
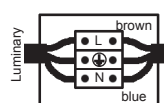
### 1 FIT THE PVC HOUSE BOX IN THE WALL

use with standard box



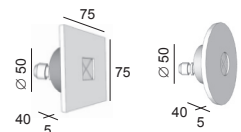
### 2 ELECTRICAL CONNECTION

on 230V

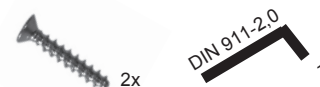


### INSTALLATION INSTRUCTIONS - PART A

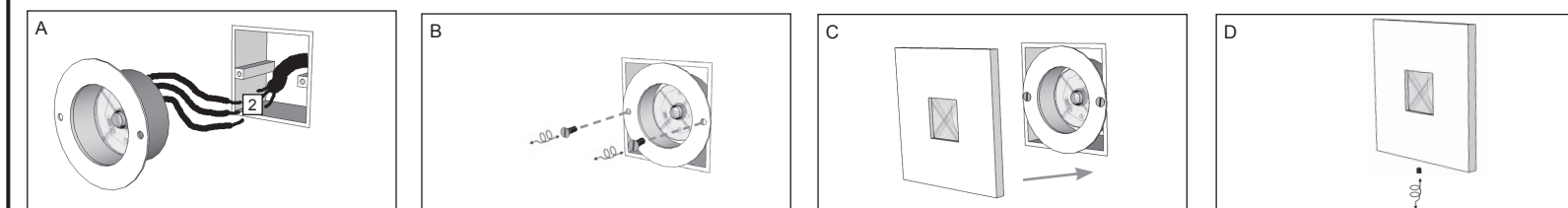
1. FIT THE PVC HOUSE BOX IN THE WALL
2. MAKE THE ELECTRICAL CONNECTION
3. PLACE THE LUMINARY
4. SWITCH ON



### ACCESSORY SET



### 3



Lees de algemene gebruiksvoorwaarden : PART B  
Lire attentivement les conditions generales d'utilisation: PART B  
Read attentively the general instructions: PART B  
Λεση Sie die algemeinen Gebrauchsanweisungen: PART B  
Διαβαση της γενικης οδηγιες : PART B

WAARSCHUWING  
AVERTISSEMENT  
WARNING  
WARNUNG  
ΠΡΟΣΟΧΗ